

Armação positiva das lajes (1217.0)

Corte A-A

escala 1:25

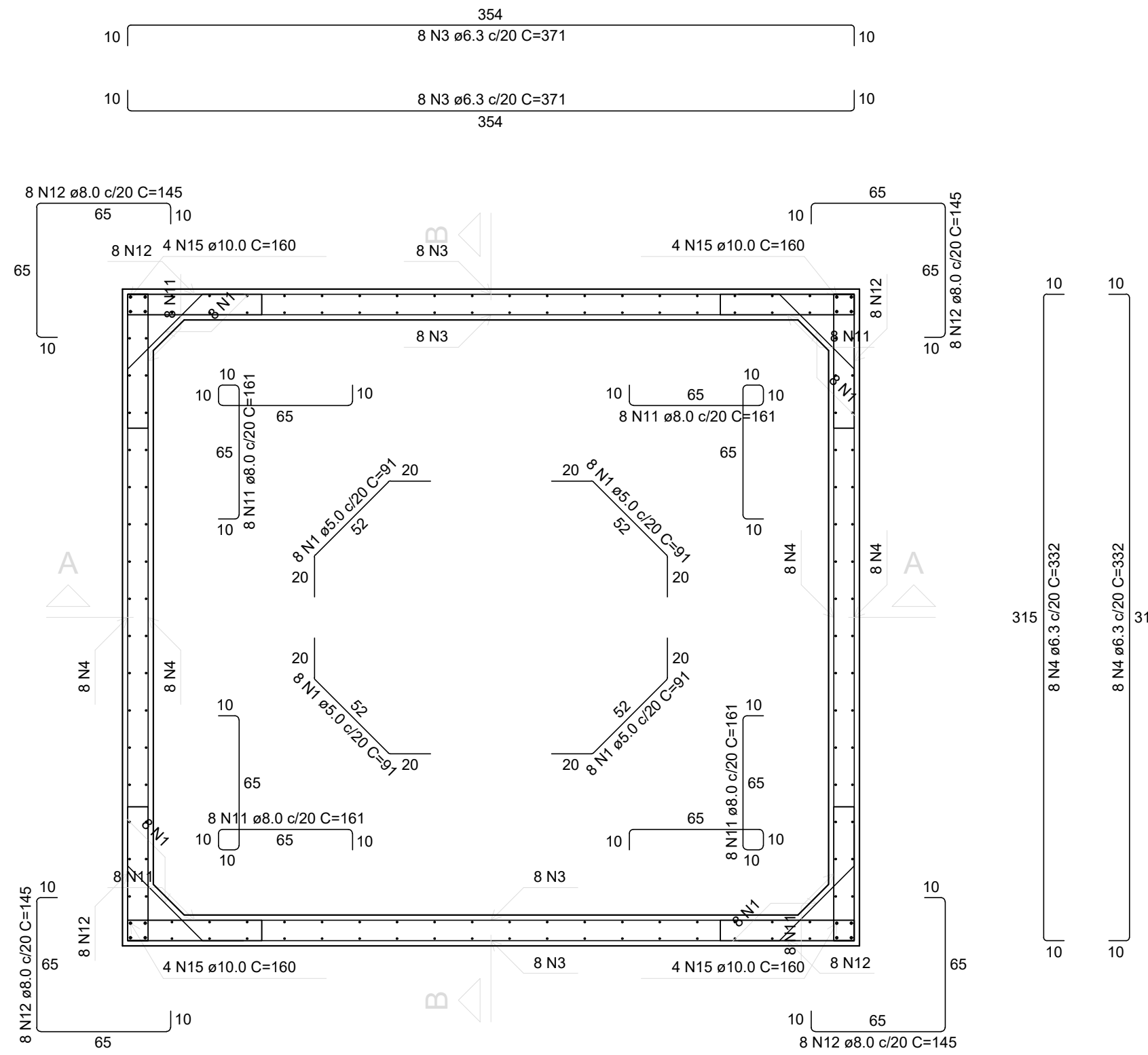
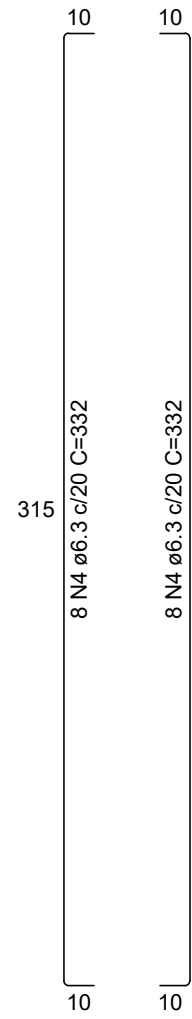
RELAÇÃO DO AÇO					
Corte A-A		Corte B-B		Planta (1292.0)	
Positivos (1217.0)					
CAÇO	N	DIAM (mm)	QUANT	C.UNIT (cm)	C.TOTAL (cm)
CA50	1	5.0	100	91	9100
	2	6.3	136	175	23800
	3	6.3	32	371	11872
	4	6.3	32	332	10624
	5	6.3	21	314	6594
	6	6.3	15	353	5295
	7	8.0	34	213	7242
	8	8.0	32	197	6304
	9	8.0	43	193	8299
	10	8.0	36	177	6372
	11	8.0	32	161	5152
	12	8.0	32	145	4640
	13	10.0	8	315	2520
	14	10.0	8	354	2832
	15	10.0	16	160	2560

RESUMO DO AÇO			
AÇO	DIAM (mm)	C.TOTAL (m)	PESO + 10% (kg)
CA50	6.3	581.9	156.6
	8.0	380.1	165
CA60	10.0	79.1	53.7
	5.0	91	15.4
PESO TOTAL (kg)			
CA50	375.3		
CA60	15.4		

Volume de concreto (C-25) = 4.35 m³
Área de forma = 50.42 m²

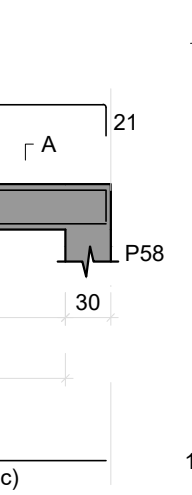
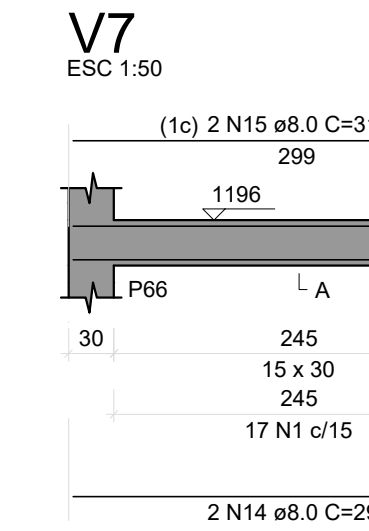
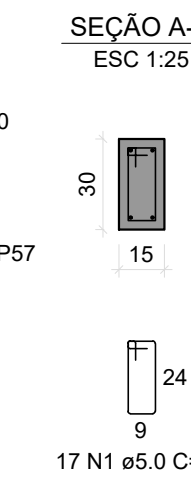
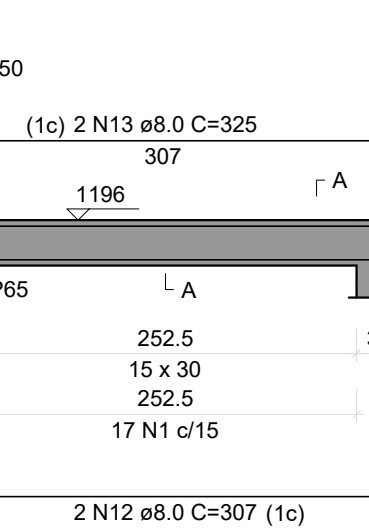
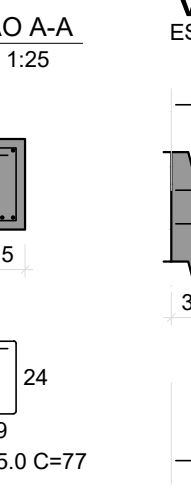
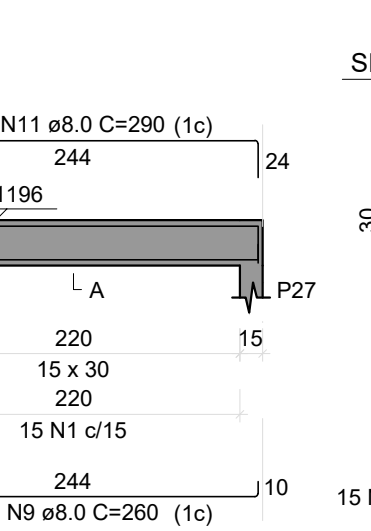
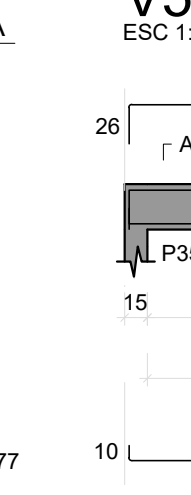
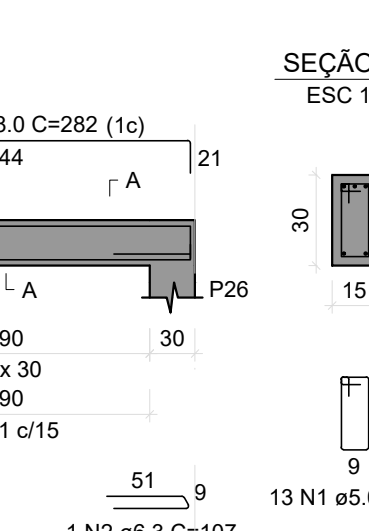
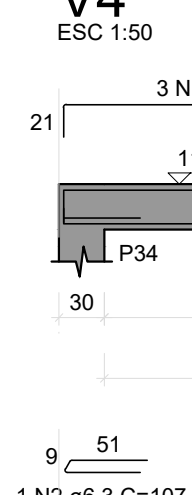
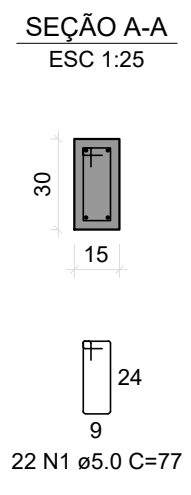
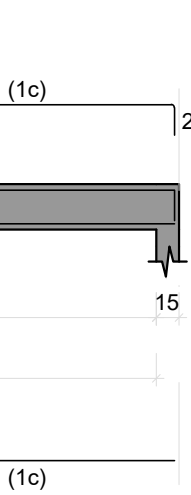
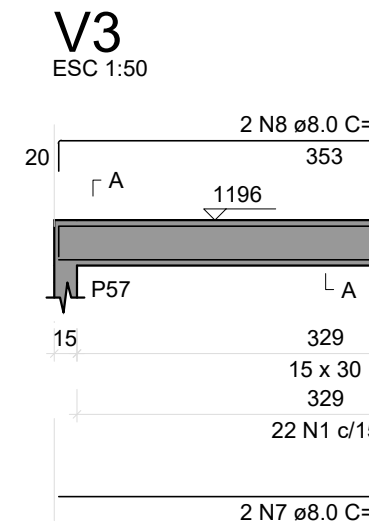
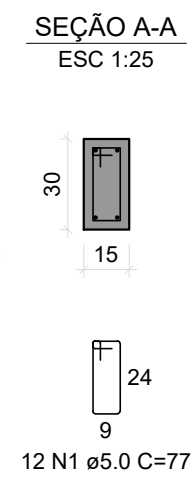
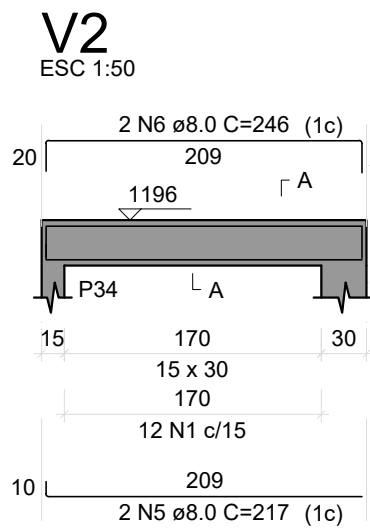
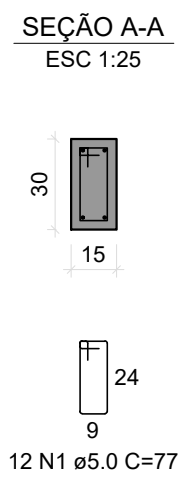
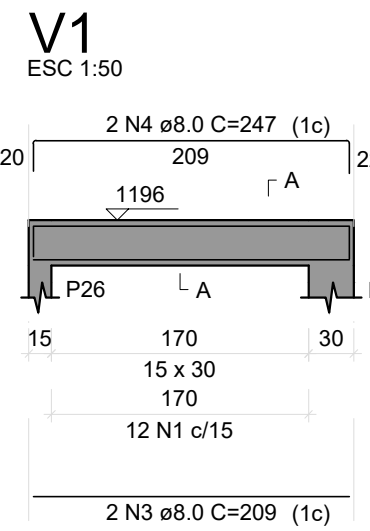
Corte B-B

escala 1:25



Planta (1292.0)

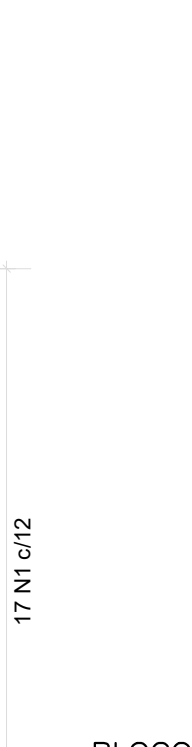
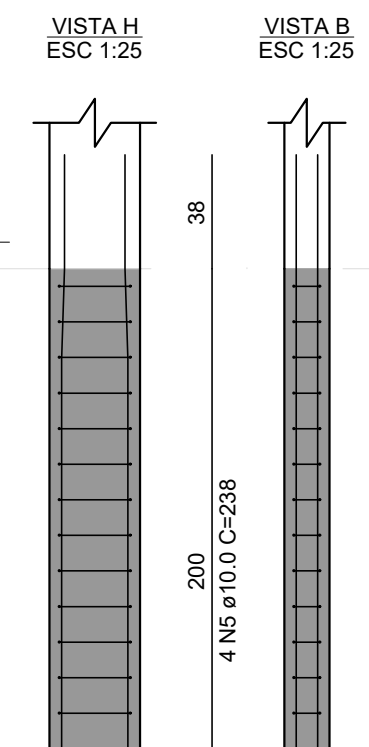
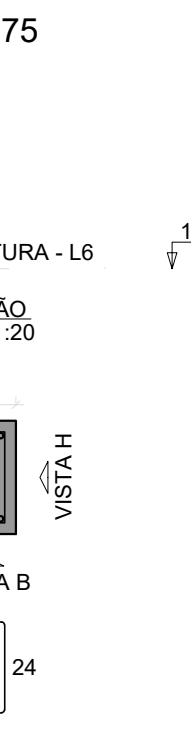
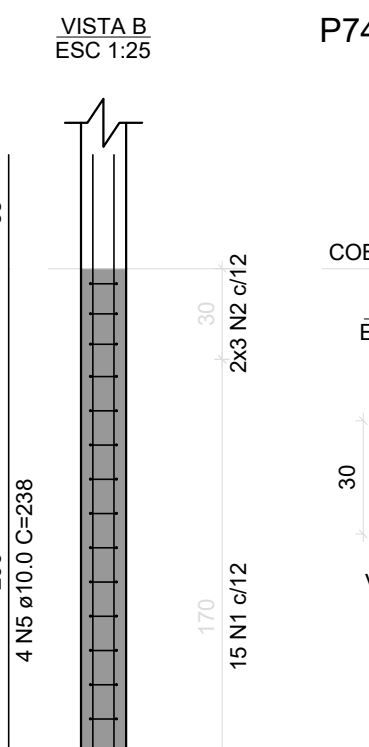
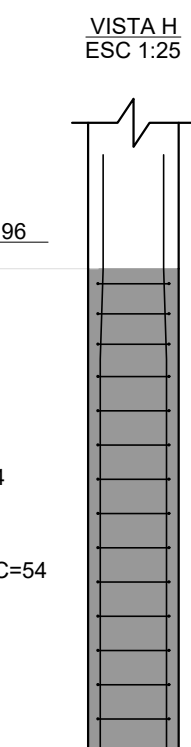
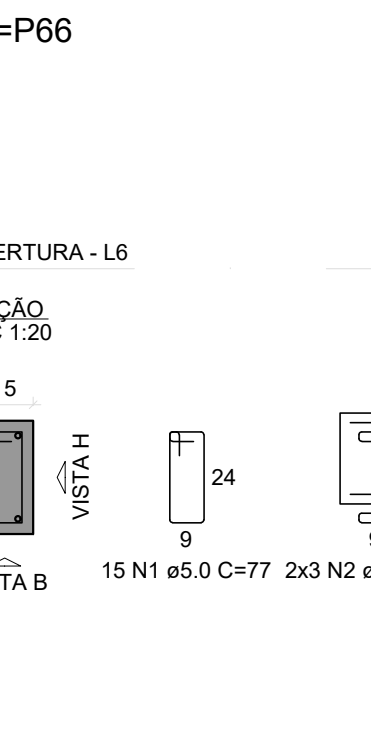
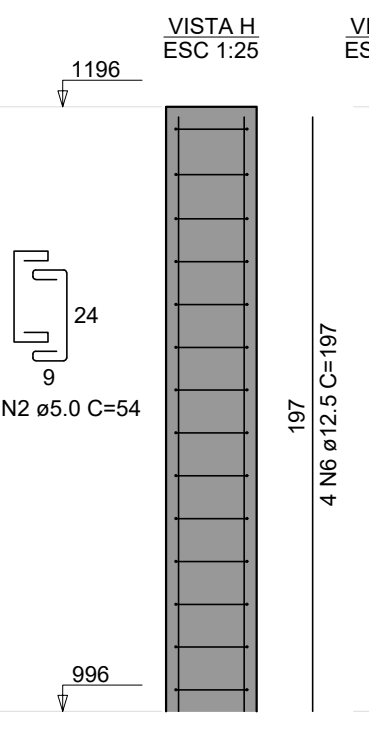
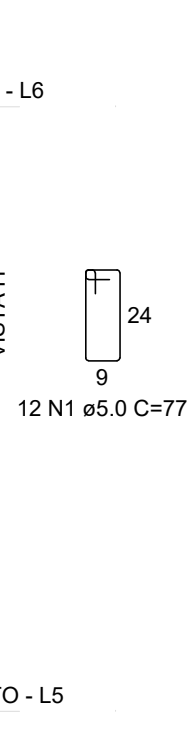
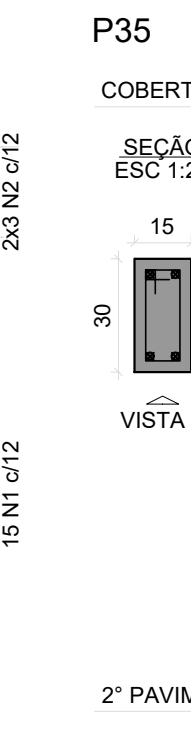
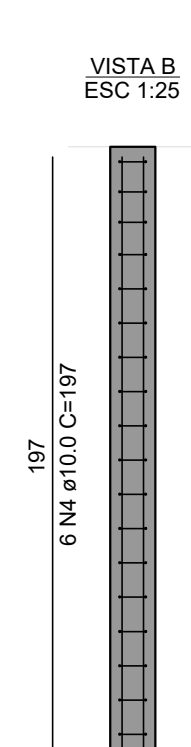
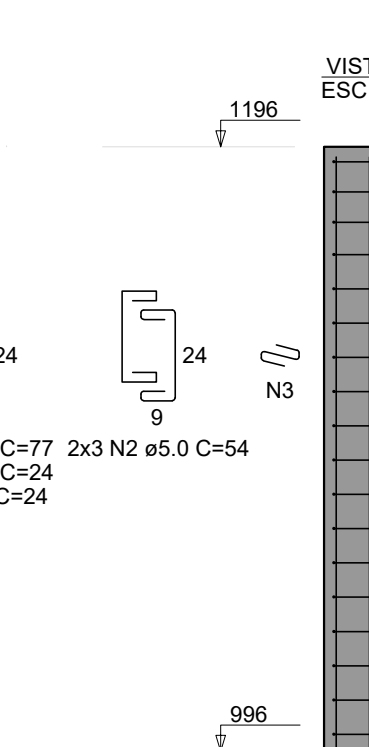
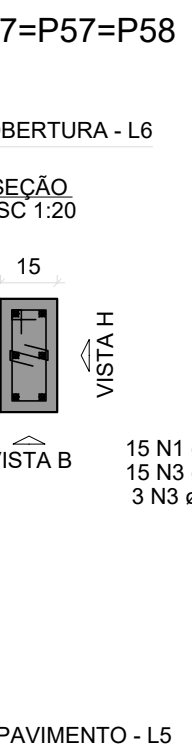
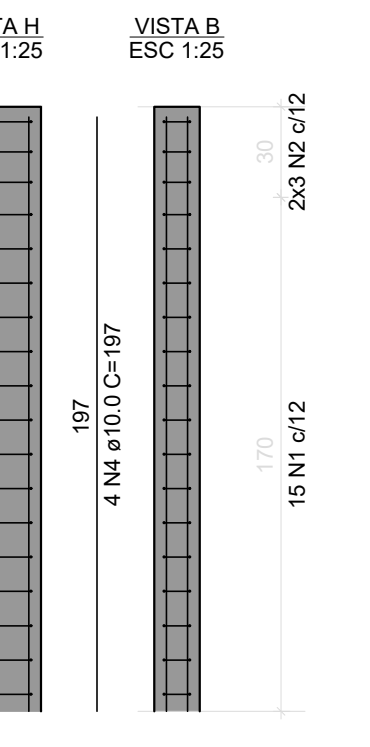
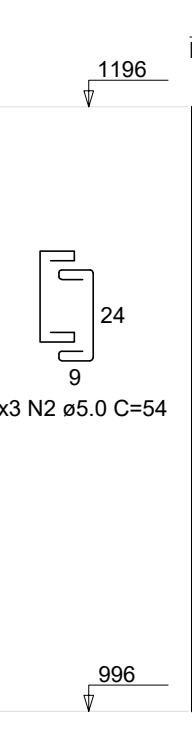
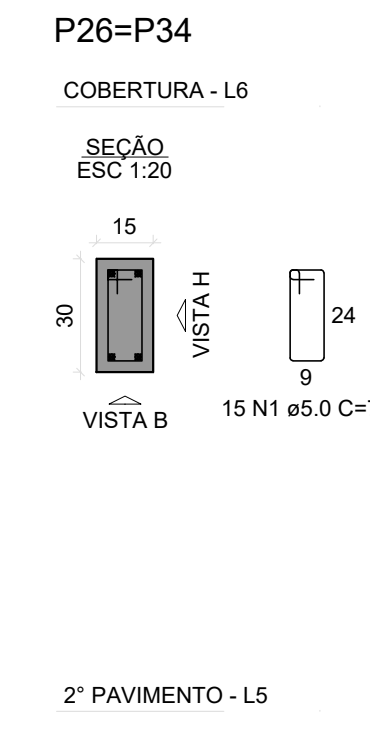
escala 1:25



RELAÇÃO DO AÇO					
V1		V2		V3	
V4		V5		V6	
V7					
AÇO	N	DIAM (mm)	QUANT	C.UNIT (cm)	C.TOTAL (cm)
CA60	1	5.0	108	77	8316
CA50	2	6.3	2	107	214
	3	8.0	2	209	418
	4	8.0	2	247	494
	5	8.0	2	217	434
	6	8.0	2	246	492
	7	8.0	2	353	706
	8	8.0	2	389	778
	9	8.0	5	260	1300
	10	8.0	3	282	846
	11	8.0	2	290	580
	12	8.0	2	307	614
	13	8.0	2	325	650
	14	8.0	2	239	598
	15	8.0	2	318	636

RESUMO DO AÇO			
AÇO	DIAM (mm)	C.TOTAL (m)	PESO + 10% (kg)
CA50	6.3	2.1	0.6
CA60	8.0	85.5	37.1
	5.0	83.2	14.1
PESO TOTAL (kg)			
CA50	37.7		
CA60	14.1		

Volume de concreto (C-25) = 0.71 m³
Área de forma = 9.61 m²



BLOCO DO CORPO DE BOMBEIROS PRANCHAS DE: 098 a 152

REVISÃO	DESCRIÇÃO	REVISADO POR	DATA
REVISÃO 00	EMISSIONAL	WAGNER	MARÇO/2024

SECRETARIA DE ESTADO DA SEGURANÇA PÚBLICA		SERGIPE GOVERNO DO ESTADO	DIRETORIA DE ARQUITETURA E EDIFICAÇÕES PRAÇA TOBIAS BARRETO, nº 20, BAIRRO SÃO JOSÉ CEP: 49050-220 ARACAJU/SE TELS: (79)3210-5454 / (79)9851-9337
TIPO PROJETO: ESTRUCTURAL EXECUTIVO DA CONSTRUÇÃO DO CENTRO INTEGRADO DE SEGURANÇA PÚBLICA (CISP) EM NOSSA SENHORA DA GLÓRIA/SE			Nº DA PRANCHA
ASSUNTO: BLOCO DO CORPO DE BOMBEIROS CAIXA D'ÁGUA			150/438
END.: RUA ANTONIO JOAQUIM DE FARIAS, S/N - N. SRA DA GLÓRIA - SE			
AUTOR DO PROJETO: WAGNER DARY DA SILVA			
RESPONSÁVEL TÉCNICO: WAGNER DARY DA SILVA RN: 270771497-6			
ESCALA: INDICADO	DATA: MARÇO/2024	DESENHISTA: WAGNER DARY DA SILVA	